

Air Capital Corvette Club



February

2000

Newsletter

Next Meeting
Wednesday, February 2nd, 2000
7:00 P.M.
Don Hattan Chevrolet
6024 N. Broadway
Wichita, Kansas

Air Capital Corvette Club Officers:

President	Dick Volkman	685-3680
Vice President	Don Crigler	729-0245
Secretary	Gary Henderson	262-7165
Treasurer	John Smith	722-1299
Officer at Large	Joni Wilson	688-1330
N.C.C.C. Governor	Bob Shick	788-4280
Newsletter Editor	Kent Michael	682-4403
www.feist.com/~kentm	ACCC's Web Page	

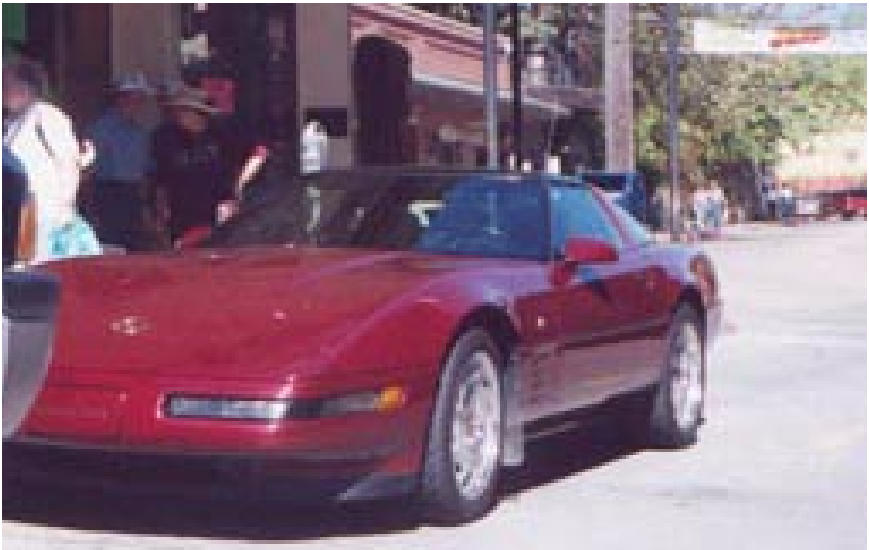
The Air Capital Corvette Club meetings are held at 7:00 p.m. on the first Wednesday of each month at Don Hatten Chevrolet, 6024 N. Broadway, Wichita, Kansas unless otherwise stated.

The Newsletter is published monthly for the members of the Air Capital Corvette Club and other Car Clubs who wish to share newsletters or information with our club. Non-members who would like to receive the newsletter can receive a one year subscription by sending \$5.00 (to cover postage) to: Air Capital Corvette Club, P.O. Box 813, Wichita, KS 67201

February 4th. Drive & Eat

Meet in the parking lot
south of the
Ice Sports Wichita
Skating Rink
505 W. Maple.

Group Leaves Promptly at 7:00 PM



Don Hattan
Don Hattan Chevrolet **GEO**

CHEVROLET **THE CHEVY TEAM**

NEW & USED CARS TRUCKS & VANS
SERVICE • PARTS • BODY SHOP
"YOUR TWICE AS NICE CHEVY DEALER"

G024 NORTH BROADWAY 744-1275 (Just Off I-35 at 61st W. Also From Downtown)

Air Capital Corvette Club Meeting Minutes January, 5 2000

Minutes of ACCC meeting on 1-5-00

Meeting was called to order by President Dick Volkman at 7:10 P.M.

Motion made and seconded to accept the Dec '99 minutes and approved.

Treasure Joni Wilson advised temporary reservation for the Jr. League Clubhouse for our Christmas party on 12-8-00. Can not complete the reservation until after June 30, 00 as their organization has first choice. The deposit for 1999 will be used for 2000. May have to change the date depending availability.

Kent Michael will try to set up a Funkhana for some time between April & May.

Daryl Burbach advised that Craig Tapp was making some improvements. Also that John Smith was in the hospital with pneumonia and no phone calls or visitors.

E-board meeting will be held at Dick Volkman's.

Grady Wilson will obtain a cake and present it to Don Hatton in appreciation for the use of their facilities for the ACCC meetings.

Meeting was adjourned and several went to the Timberline for food.

Note: The drive and eat on 1-7-00 was at the Macaroni Grill with 33 persons in attendance and 19 Corvettes, (1) white Cougar.



THE CORVETTE CENTER

1321 E. Douglas
Wichita, KS 67211

Bob Shelton, owner

(316) 267-1100

Schedule of Events

February 2	A.C.C.C. Meeting, Don Hattan Chevrolet.
February 4	February Drive and Eat - Dick & Connie Volkman.
February 4, 5	25th Annual Sunflower Swap Meet, Kansas Coliseum, Wichita, Kansas.
February 6	Classic Cars of the Past Century Auction, Kansas Coliseum, Wichita, Kansas.
February 12, 13	Salt City Rod & Custom Car Show, Kansas State Fair Grounds, Hutchinson, Kansas.
February 12, 13	26th Annual Swap Meet, Wyandotte County Fair Grounds, Kansas City, Kansas.
March 1	A.C.C.C. Meeting, Don Hattan Chevrolet.
March 3	March Drive and Eat - Art & Darlene Warren.
March 4, 5	6th Annual Corvette Cup, Columbia, Mo..
March 26	Bosley's Show & Shine Car Show, Broadway & McArthur, Wichita, Kansas.
April 5	A.C.C.C. Meeting, Don Hattan Chevrolet.
April 7	April Drive and Eat - Jay & Cindy Ravenscraft.
April 8	Corvettes of Enid, Expo 200, 8th Annual, Largest Indoor Corvette Show In Oklahoma,
May 3	A.C.C.C. Meeting, Don Hattan Chevrolet.
May 5	May Drive and Eat - Grady & Joni Wilson.



ALLIS
GLENNER
HESSTON
WHITE

Kubota.



RAVENS-CRAFT IMPLEMENT, INC.

223 S. Main

Whitewater, KS 67154

GRASSHOPPER LAWN MOWERS
GREAT PLAINS DRILLS
SUNFLOWER TILLAGE TOOLS

BUS. (316) 799-2141
HOME (316) 799-2074
JAY RAVENS-CRAFT

Schedule of Events (Continued)

May 19, 20, 21	11th Annual Lone Star Corvette Classic, Dallas, Texas
June 7	A.C.C.C. Meeting, Don Hattan Chevrolet.
June 9	June Drive and Eat - Pat & Barbara Patrick.
July 5	A.C.C.C. Meeting, Don Hattan Chevrolet.
July 7	July Drive and Eat - Gary & Betty Henderson.
August 2	A.C.C.C. Meeting, Don Hattan Chevrolet.
August 4	August Drive and Eat - Kevin Lundberg.
September 6	A.C.C.C. Meeting, Don Hattan Chevrolet.
September 8	September Drive and Eat - Larry & Vicki Bates.
October 4	A.C.C.C. Meeting, Don Hattan Chevrolet.
October 6	October Drive and Eat - Jim Pond.
October 6,7,8	10th Annual Eureka Springs Corvette Weekend
November 1	A.C.C.C. Meeting, Don Hattan Chevrolet.
November 3	November Drive and Eat - Don & Angie Crigler.
December 6	A.C.C.C. Meeting, Don Hattan Chevrolet.
December 8	December Drive and Eat - Daryl & Cindy Burbach.



ACCC Members -

\$500 off Corvette asking price

Heartland Corvettes, Inc.

Jim McAvoy, Owner

10% discount on parts, service, etc.

3223 S. Kansas Ave
Topeka, KS 66611

Office 913-267-3330
Fax 913-267-0944

Home Phone 913-271-8282

C4 Corvette Facts 1985

1. The 1982 and 1984 Corvette engines had "Cross Fire Injection", but genuine fuel injection returned to the Corvette in 1985 for the first time in two decades. The 1985 tuned-port injection, built by Bosch, was standard equipment and featured a mass airflow sensor, aluminum-tube tuned intake runners, a mold-cast plenum, and an air cleaner mounted forward of the radiator support. This new L98 engine delivered a horsepower increase from 205hp to 230hp, a torque increase from 290 lb.-ft to 330, and a real-world fuel economy increase of about 11%.

2. The overdrive selection switch for 4-speed manual transmissions was moved during 1985 production from the console to the gear shift knob.

3. Suspension rates were lowered in 1985, a result of harsh ride criticism. Springs for the base suspension were softer by 26% in front, 25% in the rear. Springs for RPO Z51 were 16% softer in front and 25% softer in the rear. To compensate for the spring change, larger-diameter stabilizer bars were included with Z51 equipped models.

4. In its January 1985 "ten best" issue, Car and Driver magazine pronounced the Corvette to be America's fastest production car at an even 150mph top speed. Corvette also took top honors in top-gear acceleration and tied for best (with Porsche) in roadholding as measured by 0-force skidpad adhesion.

5. The bore of the brake master cylinder was increased in 1985, and the booster itself was plastic, the first such application in an American Car. The new plastic booster was 30% lighter and less subject to corrosion.

6. Manual transmission 1985s came with a new, heavy-duty 8.5-inch ring differential. Rear axle gearing for manuals was 3.07:1, Standard gearing for automatic transmission was 2.73:1, but the 3.07:1 could be ordered as RPO 092. Wheel balance weights changed in 1985 from the outside-rim, clip-on style, to an inner-surface adhesive type. The change was mainly for aesthetics, but Chevrolet also believed a better balance resulted because of the adhesive weight's proximity to the wheel's depth center.

7. A full length oil pan gasket reinforcement was added to the 1985 Corvette engine to improve gasket compression seal.

8. Electronic instrumentation continued much as the previous year, but displays were revised and improved with cleaner graphics, less color on the speedometer and tachometer, and larger digits for the center-cluster liquid crystal displays.

9. A map strap was added to the 1985's drive-side sun visor.

C4 Corvette Facts 1986

1. Electronic air conditioning was announced as a late 1985 option, but introduction was delayed into the 1986 model year.

2. A Corvette convertible model was introduced in interim 1986, the first Chevrolet-built Corvette convertible since the 1975 model. The 1986 Corvette was the pace car for the 1986 Indianapolis 500. All 1986 Corvette convertibles sold were designated as pace car replicas and all included decal packages for dealer or customer installation

3. An anti-lock brake system (ABS) became standard with 1986 Corvettes. An adaption of Bosch's system, Corvettes's ABS had rotational sensors at each wheel to feed data to a computerized electronic control unit (ECU). Brake line pressure was automatically distributed for optimum braking without wheel lock and loss of steering control.

4. Cracking around the head attachment bosses required an introduction delay for design revisions to 1986's aluminum cylinder heads. The heads were ready in time for convertible production and all 1986 convertibles and late production coupes had aluminum heads. Engines fitted with aluminum heads were rated at 235hp, an increase of 5hp.

5. Center high mount stoplights were added to 1986 Corvettes to conform to federal requirements. The coupe's was mounted above the rear window; the convertible's was in a less-conspicuous rear fascia location.

6. A new vehicle anti-theft system (ATS) required a special ignition key with an embedded pellet. Lock cylinder contacts measured the pellet's electrical resistance (there were fifteen variations) before allowing start.

7. Caster was changed in 1986 from four degrees to six degrees to improve on-center road feel and to decrease wander.

Air Capital Corvette Club Newsletter

8. Fifty "Malcolm Konner Commemorative Edition" 1986 Corvettes were built in a special arrangement honoring the New Jersey Chevrolet dealership's founder, Malcolm Konner.

9. Each Corvette had special two-tone paint schemes, Silver Beige over Black, coded "spec". Window stickers reflected 4001ZA as the RPO, and a \$500 cost for MALCOLM KOONER SP.EDIT.PAI. All were coups, twenty with manual transmissions, thirty with automatics.

10. All had graphite leather interiors. One was retrofitted with a Callaway twin-turbo engine.

11. The angle of the 1986 digital instrument display was changed to improve daytime viewing by reducing glare.

12. A new upshift indicator light for manual and automatic transmission 1986 models was intended to improve fuel economy.

13. "Low coolant" and "anti-lock" instrument displays were added.

14. Wheel design was revised slightly for 1986, with the wheel center section natural finish instead of black as in 1984 and 1985.



Air Capital Corvette Club Newsletter

A.C.C.C. Membership List

Barnhill, Larry , 4133 W. 19th, Wichita, KS 67212	945-1244
Bates, Larry & Vicky , 3800 W. 77th N., Box 91, Valley Center, KS 67147.	755-0448
Brown, Gene & Marcene , 621 Covington Ct., Wichita, KS 67212	721-4768
Burbach, Daryl & Cindy , 11617 W. Burton, Wichita, KS 67209, cburbach@feist.com	721-9377
Burnett, Jerry & Lucy , 811 Wiley, Wichita, KS 67203, jblburt@aol.com	267-1133
Cheyney, Wade (Scooter) , 645 S. Quentin, Wichita, KS 67218	682-5264
Copley, Bevan , 158 S. Volutsia, Wichita, KS 67211	681-3274
Corbin, Rex & Candace , 3242 SW Prairie Creek Rd., Benton, KS 67017	778-1409
Crigler, Don & Angie , 11311 Jennie, Wichita, KS 67212	729-0245
Cutler, Theron & Meredith , 2710 N. Stoney Pt., Wichita, KS 67205	733-6019
Dilts, Wayen & Dee , 6147 N. Meridian, Wichita, KS 67204	755-1973
Edwards, Randy & Jackie , 312 N. Anqula Cr., Wichita, KS 67235	729-2444
Gann, Greg & Kathy , 6260 Independence Dr., Park City, KS 67219	744-1205
Hanson, Herb & Mary , 2464 N. 167th W, Colwich, KS 67030	796-0477
Harrison, Stan , 1317 Amity, Goddard, KS 67052	794-8387
Harvey, Robert & Hill, Debbie , 1305 Sunset, Wichita, KS 67212	722-3203
Heger, John & Lori , 11831 Albert Cr., Maize, KS 67101, Lheger@Juno.com	721-6306
Henderson, Gary & Betty , 1219 Larimer, Wichita, KS 67203	262-7165
Hendrix, Rodger & Connie , 226 Village Ct., Andover, KS 67002	733-1003
House, Terry , 3300 N. Tyler, Wichita, KS 67205	729-9246
Johnson, Fred , 327 Jonathan, Maize, KS 67101	722-4488
Johnson, Richard & Ora , 14966 SW 150th St., Rose Hill, KS 67133	776-0723
King, Merlin & Connie , 6001 W. 38th St. Ct., Wichita, KS 67215	522-4879
Kitterman, Larry and Pat , 1110 Bodine Ct., Derby, KS 67037	788-6200
Lampman, Larry & Sharon , 616 Meadowlark Ln., Newton, KS 67144	(316) 283-9298
Lane, Terry , 3602 W 19th, Wichita, KS 67203, busonhoneydew@sprynet.com	946-9404

Air Capital Corvette Club Newsletter

A.C.C.C. Membership List (Continued)

Lundberg, Kevin , 2425 N. Chadsworth, Wichita, KS 67205	729-8839
Michael, Kent & Louise , 2202 S. Old Manor, Wichita, KS 67218, kentm@feist.com	682-4403
Patrick, Carroll (Pat) & Barbara , 525 Oak Park Dr., McPherson, KS 67460, cpatrick@midusa.net	(316) 241-7453
Pittman, Gerald & Tomisha , 12708 SW Wagon Wheel, Andover, KS 67002.	733-2021
Pond, Jim , 409 Jamsetown, Andover, KS 67002, jimp@southwind.net.	733-5370
Prater, Todd & Kerry , 6516 E. 15th, Wichita, KS 67206	652-0124
Ravenscraft, Jay & Cindy , 223 S. Main, Whitewater, KS 67154	(316) 799-2074
Rogers, Tom & Claudia , 10201 E. Boxthorn, Wichita, KS 67226, TrogersPE@aol.com.	634-1250
Roth, Larry & Karen , 8 Weatherly Ct., Valley Center, KS 67147	755-2168
Shaw, Dean & Connie , 6920 W Sheriac Cr., Wichita, KS 67209	943-6920
Shick, Bob & Barb , 625 Briarwood Rd., Derby, KS 67037, rshick@aol.com	788-4280
Smith, John & Gastinau, Sharon , 1208 N. Coach House, Wichita. KS 67235	722-1299
Vandenberghe, Bob & Lea , 2412 Bellwood, Wichita, KS 67205, joycelea@fn.net	721-9738
Volkman, Dick & Connie , 5707 E. 20th, Wichita, KS 67208	685-3680
Warren, Arthur & Darlene , 201 Ceymarie, Wichita, KS 67209	944-0281
Webster, Larry & Wishon, Cindy , 707 W. Kansas #25, McPherson, KS 67460	(316) 241-1698
Whitehouse, Larry & Jean , 301 Rainbow Lakes Dr., Wichita, KS 67235	722-9385
Wickham, Don & Erma , 860 Pearl Ave, Salina, KS 67401	(913) 823-3982
Wilson, Grady & Joni , 223 N Belmont Pl, Wichita, KS 67208, rgwilson@feist.com	688-1330
Wohlgemuth, Jay , 10605 N 159 E, Benton, KS 67017	799-2785
Wyatt, Ray , 762 N. Mission, Wichita, KS 67206, rwyattw@gte.net.	683-5735
Yanda, Solen & Debra , 724 N Young, Wichita, KS 67212.	942-1546



Air Capital Corvette Club
P.O. Box 813
Wichita, KS 67201-0813